

Specification Sheet

JA5000 VPXi— UV Lamphead Power Supply



UV lamp Power supply designed to interface with the JA5000 series of lamp heads, offering variable power and system integration input and output facilities. Primary output is rated for a continuous 5kW maximum and supplied in a rugged case suitable for industrial applications.

Control Interface - Touch Screen control

- Display both Target and Actual Level.
- Easy set up of target lamp output between 30-100%.
- Read Lamp Run Hours.
- Configuration Menu adjustment of tolerance (for OK signal , pulse time and level).
- See both set and actual levels.

Control Interface (Inputs)

- E-Stop Contact Closure (24Vdc closure indicates system is safe).
- Remote Start (Pulse for 300mS will start the lamp if estop and remote stop input closed)
- Remote Stop (Open for 300mS will stop the lamp – Note priority to stop over start). Must be made if not used.
- Remote Power control (24Vdc closure - indicates power to be set remotely).
- Remote Power control input (0-10Vdc = 30 – 100% output).
- Pulse mode active (Pulse for 300mS will cause output to increase or decrease too set level)

Interface Features.

- Remote E-Stop
- Remote Start Stop.
- Pulse Mode
- Remote Power set mode.



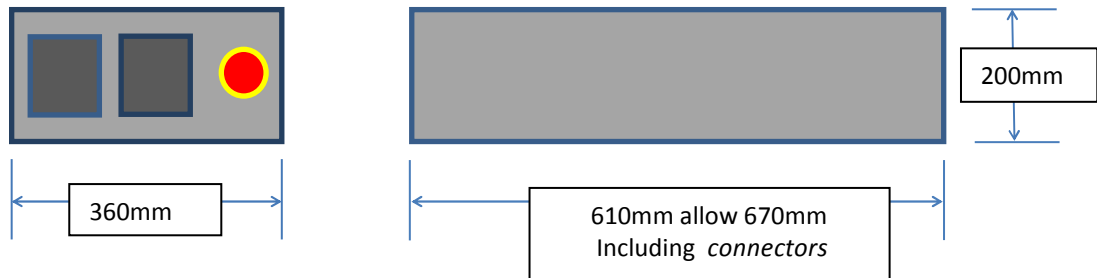
Jenton International Limited
9/10 Ardglan Industrial Estate,
Evingar Road, Whitechurch,
HAMPSHIRE RG28 7BB
UNITED KINGDOM

Tel:+44 (0)1256 892194

Web www.jenton.co.uk

Technical Specification.

Physical Layout



Note additional clearance is required for ventilation.

Electrical Supply

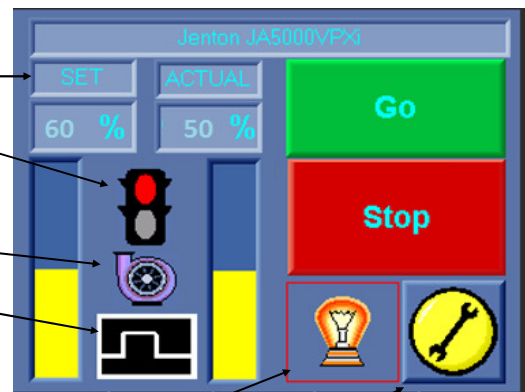
Voltage Supply	380- 415Vac – 3 Phase (3P+N+E)
Phase Loading	15Amps (at 100%) - Ph-Ph 2 Amps Ph– Neutral
Termination	Supplied with Red 32A - 5 wire plug.

Output

Lamp Power	400V
Max Lamp Power	5000 Watts
Aux Fan Drive	24Vdc 3 5 Amps

Control Features.

- Set level between 30 and 100%
- Status indicates Green when Actual output level of bulb is within set tolerance.
- Indicates Fan Status (Appears when running).
- Pulse mode – Indicates that pulse mode has been activated.
- Bulb status – on or off – also pressing here will show lamp hours.
- Configuration Menu.



Jenton International Limited
9/10 Ardglan Industrial Estate,
Evingar Road, Whitchurch,
HAMPSHIRE RG28 7BB
UNITED KINGDOM

Tel: +44 (0)1256 892194

Web www.jenton.co.uk

Product Order Code

Power Supply —JA5000VPXI-0000

Recommended Lamp Head - 3706-0000